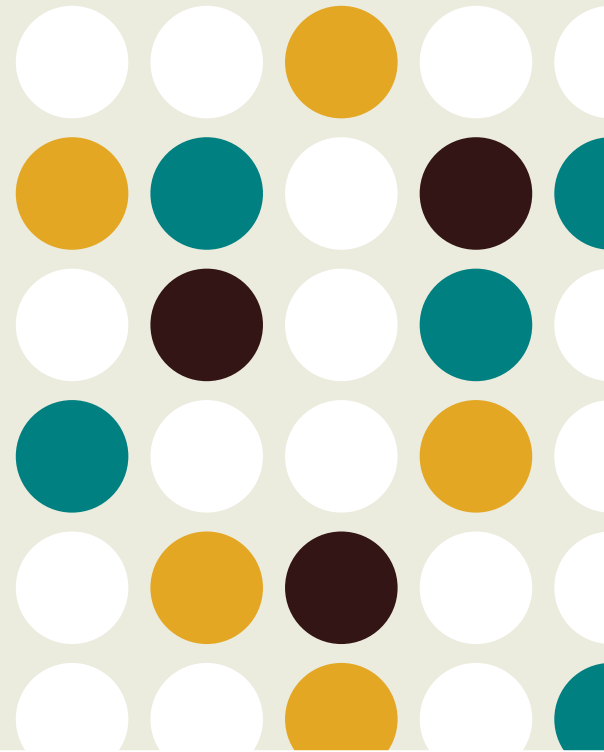


# > Fundamentally Different

Creating lasting change is no small feat. There are complex challenges in your communities that call for an innovative, purpose-driven approach. **We can help you lead the way.**



**100,000+**

In-Network Community Organizations

**45+ milion**

Users nationwide

**630+**

Customers

**610,000+**

Program locations nationwide

**4,000+**

Nonprofits Trained across 48 States

## > AN OPEN, NATIONWIDE NETWORK

We offer the largest network of free and reduced-cost programs in every ZIP Code across the U.S., helping you reach your seekers wherever they are.

## > MEANINGFUL COMMUNITY ENGAGEMENT

Building and maintaining positive relationships with nonprofits requires trust. We help you foster deep, long-term partnerships with the social care providers that receive referrals.

## > COMMITMENT TO QUALITY

Our Network Curation Team dedicates their time to researching resources, adding programs to our network, and responding to your suggested updates.

## > COLLECTIVE IMPACT

As a Public Benefit Corporation, we're required to consider the impact of our decisions on our workers, customers, suppliers, community, and the environment.



### > TRANSPARENT PRICING

We offer a transparent, low barrier to entry pricing model so you can prioritize connecting more people to help on our platform. View our pricing at <https://company.findhelp.com/our-solutions/>

### > SCALABLE DESIGN

With findhelp, there is no limit to the number of people (staff and seekers) that can use your sites. Our platform is built to support nationwide activity at scale.

### > CLOSED-LOOP REFERRALS

Your users can track and update social care records continuously throughout the care coordination processes, providing access for both your staff and the recipient nonprofit to close the loop on referrals.

### > FREE TOOLS FOR NONPROFITS

With our free intake, screening, and integration tools for nonprofits and social care providers, community organizations can receive and respond to referrals from people seeking help.

### > TAILORED SEARCH

You can focus the network on priority partners and internal programs while still providing access to the full range of national, state and local programs. Sophisticated filters refine search results, resulting in the most relevant resources for your users.

### > INTEGRATION SUPPORT

You shouldn't be burdened by costly custom configurations; we use FHIR-based APIs to support data exchange with electronic health records (EHRs) and care platforms such as Epic, Cerner, eClinicalWorks, athenahealth, and more. See our current list of integrations: [company.findhelp.com/partnerships](https://company.findhelp.com/partnerships)

### > INTEROPERABILITY FOCUS

We support data sharing (with security and privacy) and advocate for interoperability standards related to the easy exchange of assessment and referral data, regardless of which system of record you use.

### > PRIVACY IS A PRIORITY

We take extraordinary measures to secure the information of our end users, including requiring consent with every referral. Our users can control who has access to their information and can change or remove that access at any time.

### > ANALYTICS & INSIGHTS

See how your users are finding and connecting to services (and where they ultimately get help) with our analytics dashboards and SQL product. Review trends and details to quantify the impact of your platform and help you make both operational and strategic decisions. See our network: [company.findhelp.com/our-solutions/network](https://company.findhelp.com/our-solutions/network)

