

Solutions for Education



Schools want to help students achieve their academic and professional goals, but social factors beyond the institutions' control can have detrimental impacts on student success and graduation rates.

Findhelp supports students at educational institutions around the country, from K-12 to community college systems to private universities and prestigious schools of medicine, by connecting students, staff, and families with resources that help their education stay on track.

- A college student's car has broken down and public transportation isn't available so they're forced to miss classes.
- An elementary school student doesn't have enough food at home and is struggling to focus and complete their homework.
- It's finals and a college student living on campus is out of money to their meal plan and is only eating once a day.



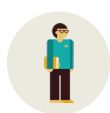
Educational institutions are at the forefront of addressing students' social needs through dedicated programs and in-house resources, and community organizations provide the additional support and goods that individuals and families need to achieve stability. There is a clear link between social care needs and education: children and adults whose social needs are met are better students, and a better education yields greater health outcomes over a lifetime.

Who would use Findhelp at your organization?

Counselors, social workers, school nurses, university health centers, academic advisors, and others are in positions to connect with students and families and understand their immediate needs. They can use the Findhelp platform to connect them to local, supportive resources, so that they can focus on their education and schoolwork.

And, for many higher education institutions, encouraging student self-navigation is a priority based on the ratio of support staff to students.

How does Findhelp uniquely support education?



Connect students and families to help they need.



Empower individuals to seek assistance anonymously and with dignity.



Support student success and graduation rates.

How do current education customers find success with Findhelp?

Impact in action video: how the University of Hawai'i empowers student success.



At Ivy Tech Community College, an online tool helps students address life challenges.



Which education leaders already work with Findhelp?



Want to learn more?

[Schedule a demo](#) with one of our team members to see how Findhelp can partner with your organization.